

# CONTRACTOR RESPONSIBILITIES



## **Operating the door temporarily until permanent power is provided.**

The door is provided with pioneer type hydraulic nipples located on the hydraulic lines near the pump. Tractors or other hydraulic equipment can operate the door using these connections. Hydraulic connections should be left attached for the entire door cycle to prevent pressure buildup.

Not recommended but if a generator must be used to supply temporary electrical power, **Only use a generator that can provide 10,000 watts.** Do Not starve the pump unit of electrical power by using undersized generators. This will adversely affect the lifetime of the power unit and **VOID YOUR WARRANTY.**

## **Connect permanent electrical power as soon as possible**

ELECTRICAL WIRING SHALL BE INSTALLED BY AN ELECTRICAL CONTRACTOR AND MEET FEDERAL, STATE AND LOCAL CODES.

Both the pump and the remote control option can be wired by the same power supply. A **220v 30 amp breaker is required.** All wiring is completed using the color coded wiring located in the pump switch box.

Windows:

Windows installation is restricted to the following limitations: No window larger than 60" No window taller than 48" No single pane of glass larger than 9' sq. feet. Window head jamb is provided. Side jambs and sill are by others. See the Installation Manual for all window requirements.

**SAFETY** You are responsible for the safe use of this product. Unsafe use could result in property damage, serious personal injury, serious injury to others or a fatality.

Do not operate the door until you understand all the safety instructions. If you have any questions, contact your door provider or go to [www.powerliftdoors.com](http://www.powerliftdoors.com) for assistance.

Recognize safety information and labels:

- The labels are located on the pump and at eye level at each door frame jamb.
- Understand the label's meaning and the potential risk it identifies

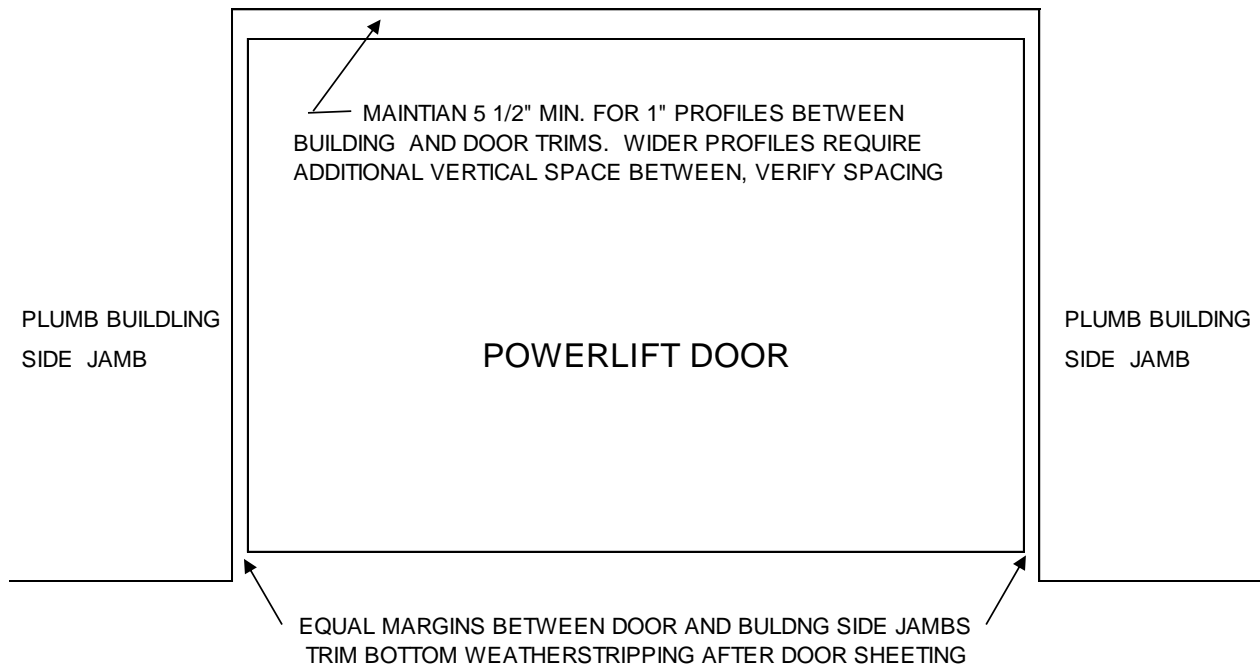
- Keep the labels in good condition
- Replace unreadable labels by contacting:  
your door installer or [info@www.powerliftdoors.com](mailto:info@www.powerliftdoors.com)

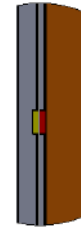
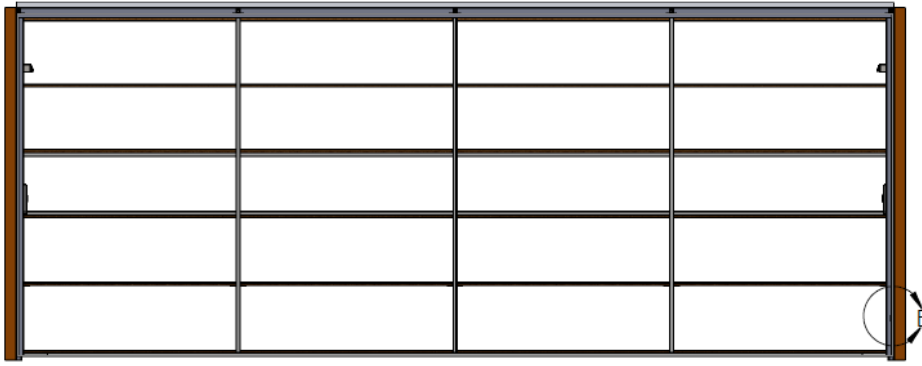
Follow all safety instructions:

- Read and understand all safety, operation and maintenance instructions
- Allow only those persons who have read and understand the instructions to operate the door
- Turn off power when making electrical connections or conducting any electrical work
- Install all electrical connections per state and local codes
- Do not re-adjust or modify the settings completed by the door installer
- Avoid electrical shock by not operating controls with wet hands or standing on a wet surface
- Operate the door only for the door's intended purpose
- Inspect and verify that the area in the path of the door swing is free of equipment, vehicles or obstructions.
- Stay alert and watch attentively during the door's operation
- Keep fingers and extremities away from pinch points located between the door and door frame
- Keep children and pets away from the door while door is operating
- Maintain the door in good operating condition
- Wear safety glasses when using hydraulic connections
- If a remote control is ordered, do not leave the remote transmitter where unauthorized persons could operate the control.

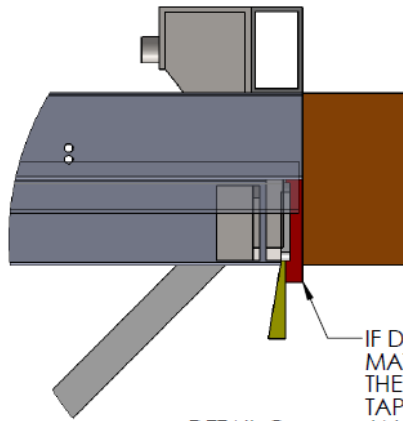
## BUILDING SIDE

LEVEL AND STRAIGHT BUILDING HEADER





DETAIL B  
SCALE 1 : 20



DETAIL C  
SCALE 1 : 8

IF DOOR IS NOT CENTERED IN OPENING, USE SCRAP WOOD MATERIAL TO SHIM DOOR. DO THIS BY PLACING SHIMS BETWEEN THE BOTTOM OF THE DOOR FRAME AND THE BUILDING JAMB AND TAPPING THE SHIM(S) IN UNTIL THE SPACE BETWEEN THE DOOR JAMB AND BUILDING JAMB IS THE SAME ON BOTH SIDES OF THE DOOR. THEN SHEET THE DOOR AND REMOVE THE SHIMS WHEN FINISHED.

### TYPICAL SIDE JAMB DETAIL

OUTSIDE OF BUILDING

INSIDE OF BUILDING

Building Sheeting

BUILDING OPENING SIDE JAMB

5"

Weather Sealant by others

**NOTES:**

Cut door bottom weatherstripping to touch side jamb if left long

Maintain even margins at each door edge

5X3 Door Tube

5X3 Tube Post

Door Sheeting

Door

Not to Scale

# TYPICAL HEADER DETAIL

