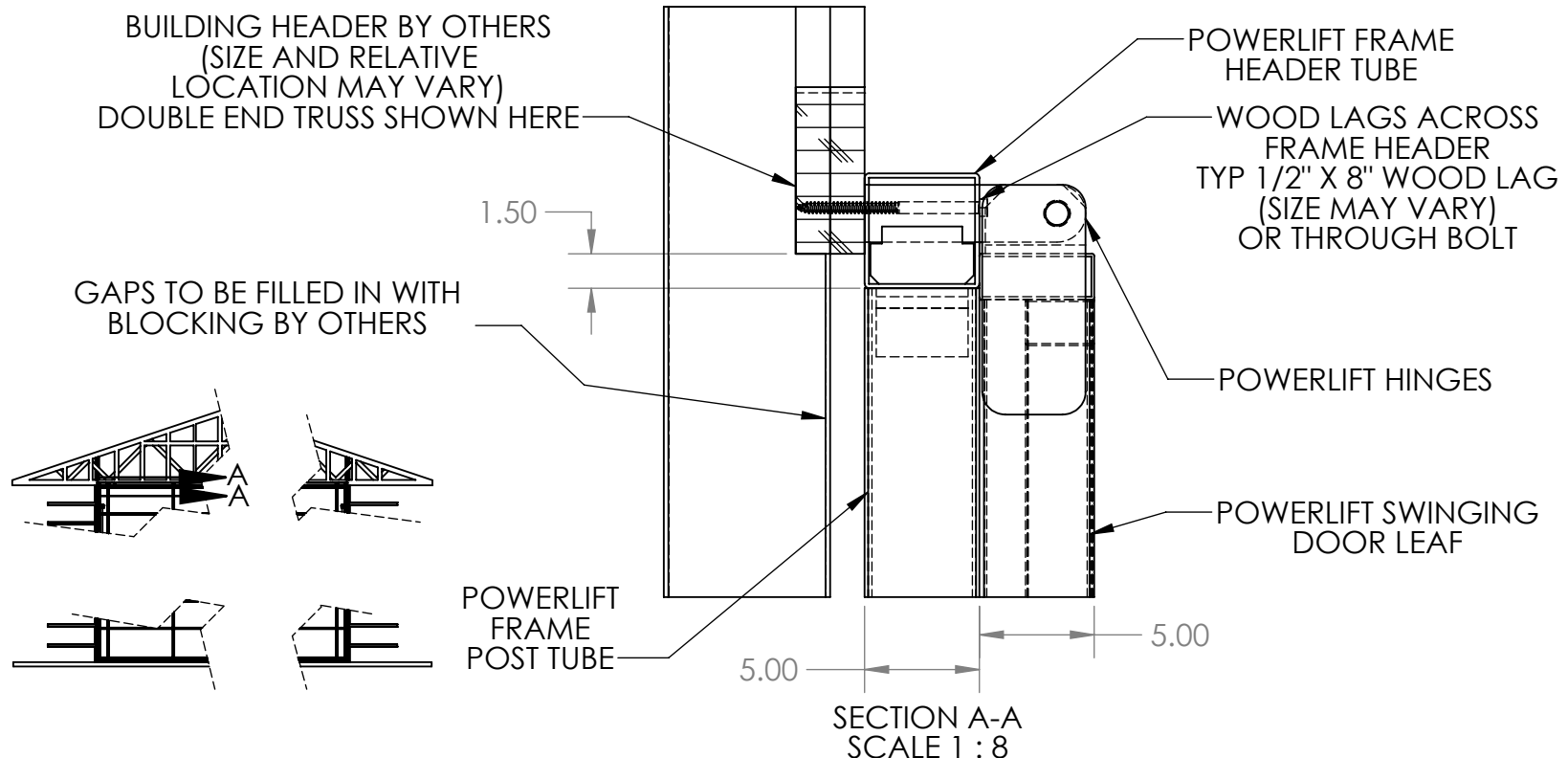


Wednesday, May 11, 2022 9:19:29 AM

POWERLIFT STANDARD OUTSIDE MOUNT HEAD DETAIL (DOUBLE TRUSS WOOD BUILDING HEAD MEMBER)

B

B



SECTION A-A
SCALE 1 : 8

A

A

PROPRIETARY AND CONFIDENTIAL
THE INFORMATION CONTAINED IN THIS DRAWING IS THE SOLE PROPERTY OF POWERLIFT DOORS. ANY REPRODUCTION IN PART OR AS A WHOLE WITHOUT THE WRITTEN PERMISSION OF POWERLIFT DOORS IS PROHIBITED.



		UNLESS OTHERWISE SPECIFIED:		NAME	DATE
		DIMENSIONS ARE IN INCHES	DRAWN		
		TOLERANCES:	CHECKED		
		FRACTIONAL: ±	ENG APPR.		
		ANGULAR: MACH ± BEND ±	MFG APPR.		
		TWO PLACE DECIMAL ±	Q.A.		
		THREE PLACE DECIMAL ±	COMMENTS:		
		INTERPRET GEOMETRIC TOLERANCING PER: ASME Y14. 5-2009			
		MATERIAL			
		FINISH			
NEXT ASSY	USED ON				
APPLICATION		DO NOT SCALE DRAWING			

Part Number		N/A	
TITLE:			
Wood Jamb and Header Outside Mount			
SIZE	Door Type(s)	REV	
A	Standard	A	
SCALE: 1:25		WEIGHT:	SHEET 1 OF 3

Wednesday, May 11, 2022 9:19:29 AM

POWERLIFT STANDARD OUTSIDE MOUNT JAMB DETAIL (WOOD BUILDING JAMB MEMBER)

BUILDING JAMB BY OTHERS
(SIZE AND RELATIVE
LOCATION MAY VARY)

POWERLIFT OUTSIDE
FRAME POST MEMBER

5.00

5.00

POWERLIFT OUTSIDE
DOOR LEG MEMBER

POWERLIFT DOOR
BOTTOM TRUSS MEMBER

SECTION B-B
SCALE 1 : 12

5.81

3.00

WOOD LAGS SPACED
APPROX. 36" ON-CENTER
TYP 1/2" DIA. WOOD LAG
(SIZE MAY VARY)

POWERLIFT CYLINDER MOUNT

POWERLIFT CYLINDER

STEEL PLATES
LAG BOLTS
THROUGH

DETAIL F
SCALE 1 : 30

STEEL PLATES
LAG BOLTS
THROUGH

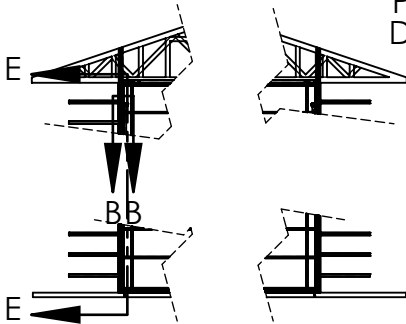
25.88

4.25

APPROX.
30" TYP

6.00

SECTION E-E
SCALE 1 : 60



PROPRIETARY AND CONFIDENTIAL

THE INFORMATION CONTAINED
IN THIS DRAWING IS THE SOLE
PROPERTY OF POWERLIFT
DOORS. ANY REPRODUCTION
IN PART OR AS A WHOLE
WITHOUT THE WRITTEN
PERMISSION OF POWERLIFT
DOORS IS PROHIBITED.



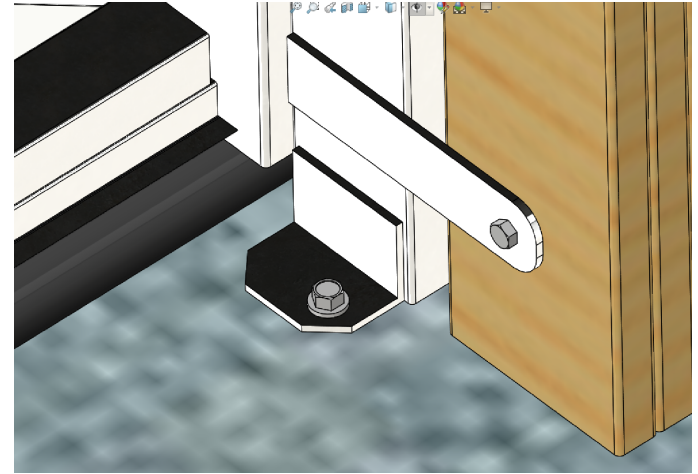
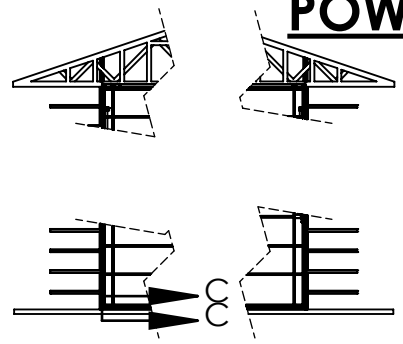
		UNLESS OTHERWISE SPECIFIED:		NAME	DATE	Part Number	N/A	
		DIMENSIONS ARE IN INCHES TOLERANCES: FRACTIONAL ± ANGULAR: MACH ± BEND ± TWO PLACE DECIMAL ± THREE PLACE DECIMAL ±		DRAWN		TITLE: Wood Jamb and Header Outside Mount		
		INTERPRET GEOMETRIC TOLERANCING PER: ASME Y14. 5-2009		CHECKED				
		MATERIAL		ENG APPR.				
		FINISH		MFG APPR.				
NEXT ASSY	USED ON			Q.A.		SIZE	Door Type(s) Standard	REV A
APPLICATION		DO NOT SCALE DRAWING		COMMENTS:		SCALE: 1:25	WEIGHT:	SHEET 2 OF 3

Wednesday, May 11, 2022 9:19:29 AM

POWERLIFT STANDARD OUTSIDE MOUNT SILL DETAIL

B

B



POWERLIFT
FRAME POST

GAPS TO BE FILLED
IN WITH BLOCKING
BY OTHERS

.25

CONCRETE ANCHOR
TYP 1/2" X 3" MINIMUM
SIZE MAY BE INCREASED
AS NEEDED

MINIMUM 1/4" THICK
POWERLIFT FOOT PLATE WELDED
1 PER POWERLIFT FRAME POST

CONCRETE/REBAR FOUNDATION
TO BE SPECIFIED AND
COMPLETED BY OTHERS

SECTION C-C
SCALE 1 : 10

POWERLIFT BOTTOM DOOR TRUSS
VARIES IN SIZE, CONFIGURATION,
AND LOCATION

POWERLIFT WEATHERSTRIP
CLOSEOUT PLATES

POWERLIFT DOOR SEAL
STANDARD SEAL AND
OPTIONAL SECONDARY SEAL
BOTH SHOWN HERE

PROPRIETARY AND CONFIDENTIAL

THE INFORMATION CONTAINED
IN THIS DRAWING IS THE SOLE
PROPERTY OF POWERLIFT
DOORS. ANY REPRODUCTION
IN PART OR AS A WHOLE
WITHOUT THE WRITTEN
PERMISSION OF POWERLIFT
DOORS IS PROHIBITED.



		UNLESS OTHERWISE SPECIFIED:		NAME	DATE
		DIMENSIONS ARE IN INCHES	DRAWN		
		TOLERANCES:	CHECKED		
		FRACTIONAL ±	ENG APPR.		
		ANGULAR: MACH ± BEND ±	MFG APPR.		
		TWO PLACE DECIMAL ±	Q.A.		
		THREE PLACE DECIMAL ±	COMMENTS:		
		INTERPRET GEOMETRIC TOLERANCING PER: ASME Y14. 5-2009			
		MATERIAL			
		FINISH			
NEXT ASSY	USED ON				
APPLICATION		DO NOT SCALE DRAWING			

Part Number	N/A	
TITLE:	Wood Jamb and Header Outside Mount	
SIZE	Door Type(s) Standard	REV A
SCALE: 1:25 & WEIGHT:		SHEET 3 OF 3

A

A